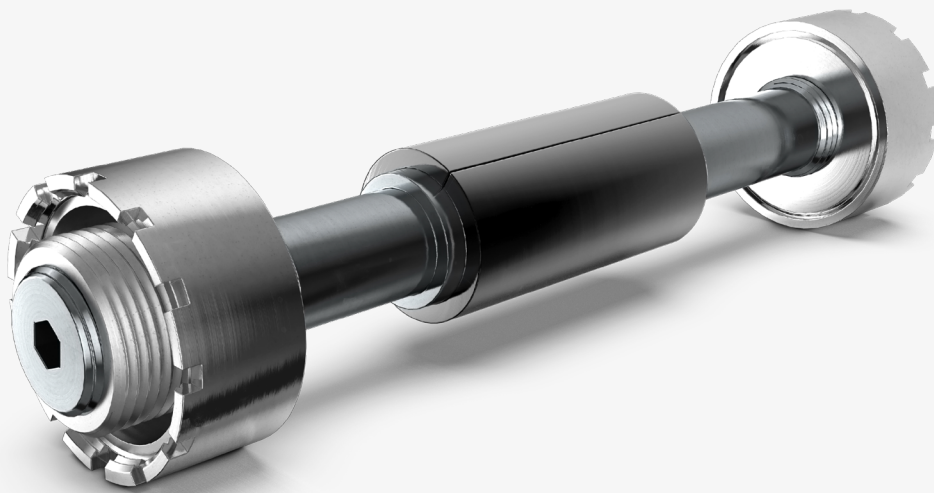


SUPERBOLT **HYFIT**

**NEXT GENERATION HYDRAULIC
ACTUATED COUPLING BOLT**



Latest technology
and innovation



Used with hydraulic
nut and hydraulic
bolt tensioner

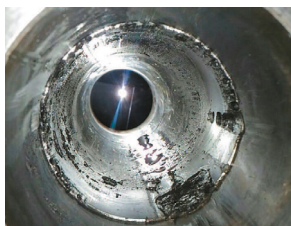


Significant time
and labor savings



Safe and
durable

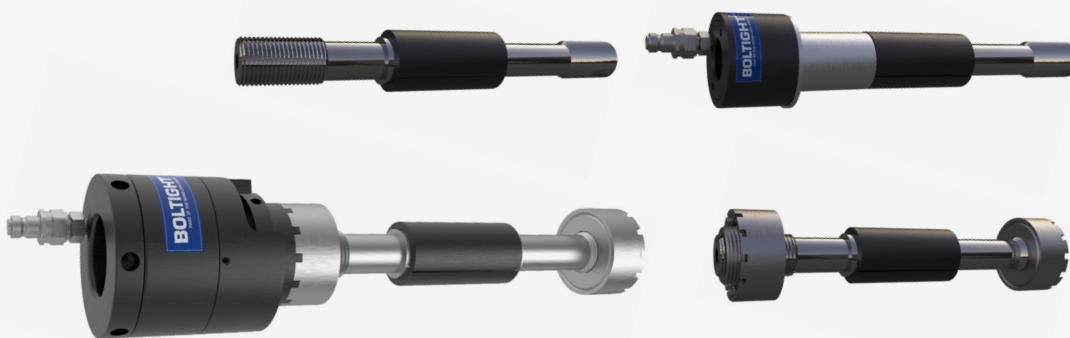
A NEW LEVEL IN HYDRAULIC COUPLING BOLT SAFETY



Traditional, 'fitted' bolts reduce in diameter when tightened, leaving clearance and the possibility of coupling slippage under shock loading. This can lead to difficulty in removal, resulting in coupling hole and bolt damage and causing outage delays and expensive repair work.

Hole and bolt damage as shown in these images can lead to days of unplanned work, meaning loss of availability and additional high-cost critical downtime.

Superbolt HyFit expansion bolts prevent all of these issues because they are installed and removed in clearance conditions, ensuring coupling make-up and break-up schedules are easily maintained.



BOLTIGHT™

HyFit is supplied with a tried, tested and proven Boltight hydraulic tensioner, hydraulic nut and ancillary items.

INNOVATION AT ITS BEST!

Superbolt has already achieved great success with the EzFit mechanical expansion bolt. While dealing with customer inquiries, a need was identified for a consistently safe and reliable hydraulically actuated coupling bolt.

The New Superbolt HyFit system has been conceived to eliminate the need for an internally connected thread puller. It uses a threaded connection of larger diameter than the bolt, making it far safer to use than any existing hydraulic coupling bolt design.

SPECIFICATION

The New Superbolt HyFit is not a standard range of products but a system which can be designed for any requirement. Unlike traditional hydraulically actuated coupling bolts, Superbolt HyFit...

...uses two separate dimensionally different heads and just one operating pressure, eliminating the risk of using the wrong pressure during operation.

...uses uniquely designed heads so that there is no way to use them incorrectly during the procedure.

...has a new HyFit nut which is used to tension the bolt, so it can be retrofitted to any existing coupling bolt and used with the HyFit system.

SUPERBOLT HYFIT

Superbolt HyFit is ideal for steam turbines, gas turbines, marine propulsion drives and all heavy rotating equipment providing benefits which include;



SECURE

Elimination of internally connected thread puller.

EFFICIENT

Design that removes the need for oil injection removal methods, preventing a known mode of failure.

COST SAVING

Hole preparation costs are reduced as less demanding hole tolerances are required.

SAFE

Use of two dimensionally different hydraulic heads with one operating pressure.

COST EFFICIENT

Fully reusable, only requires sleeve replacement for rotor changes.

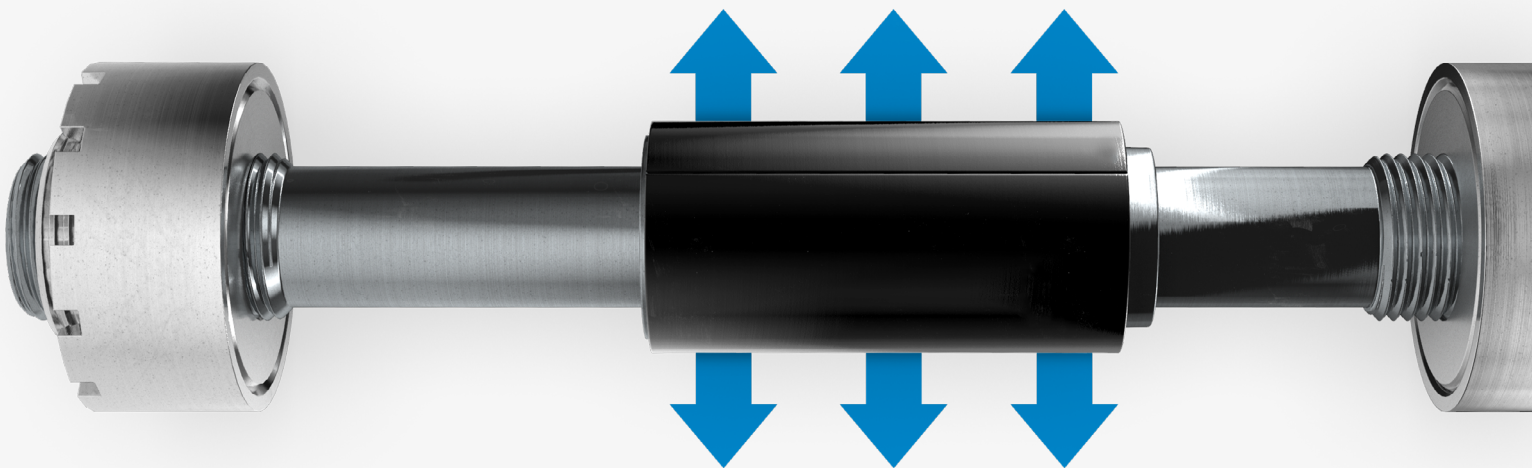
ACCURATE

Radial fit which allows for better coupling alignment and concentricity.

PRACTICAL

Superbolt HyFit split sleeves allow greater expansion to achieve hole tolerances more easily.

WITH DECADES OF SUCCESS IN EVERY MAJOR INDUSTRY WORLDWIDE



Our expansion bolts are truly fitted into the hole due to radial expansion of the conical bore sleeve.

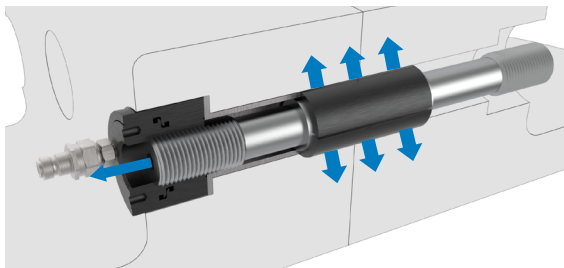
By design, accurate radial force combined with the known axial clamping load the coupling bolts provide total protection against coupling slippage and so prevent bolt/hole damage during subsequent removals.

Whether fitting hydraulically using Superbolt HyFit or mechanically using EzFit, these bolts can be retrofitted to replace traditional interference or force fitted bolts reliably and cost effectively.

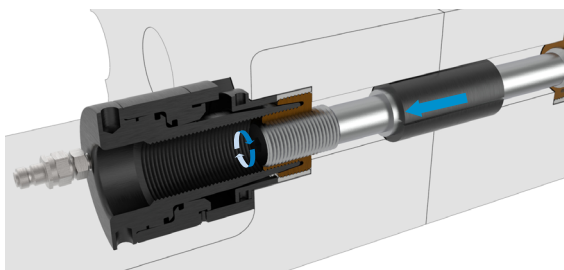
With production sites in Switzerland, UK and the US, worldwide material specifications, certification and shipping are all easily provided with sales offices and representation globally.

EASY INSTALLATION AND REMOVAL

INSTALLATION

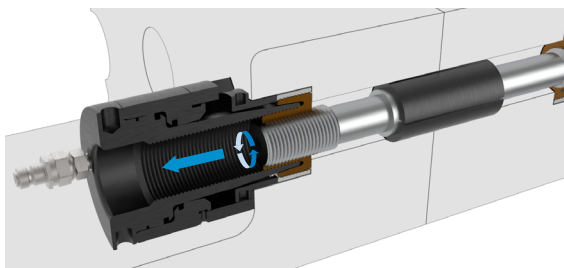


- Fit bolt and sleeve into hole.
- Use the Expansion Spacer to position sleeve axially in the hole.
- Screw Boltight Hydraulic Nut up against Expansion Spacer.
- Connect Pump and operate to working pressure.
- Sleeve is now expanded into hole. Remove pressure, Hydraulic Nut and Spacer.

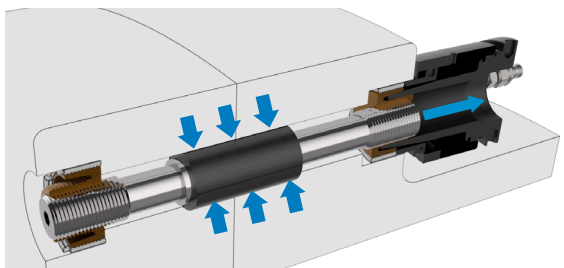


- Screw on Superbolt HyFit Nuts both sides to contact coupling faces.
- Attach Boltight Hydraulic Tensioner and operate to working pressure.
- Use Tommy Bar to screw Lock Ring to contact coupling face.
- Release pressure and remove Hydraulic Tensioner.

REMOVAL



- Screw Boltight HyFit Hydraulic Tensioner onto HyFit Nut.
- Attach Pump and operate to working pressure.
- Unscrew Lock Ring using Tommy Bar.
- Release Pressure and back off HyFit Nut 5 turns.



- Screw Boltight HyFit Hydraulic Tensioner onto back HyFit Nut and operate to working pressure.
- Release pressure and remove Boltight Hydraulic Tensioner and then HyFit Nuts.
- Remove bolt and sleeve from hole.

Installation, maintenance training and supervision are offered to ensure client satisfaction. An ongoing maintenance support programme is available.